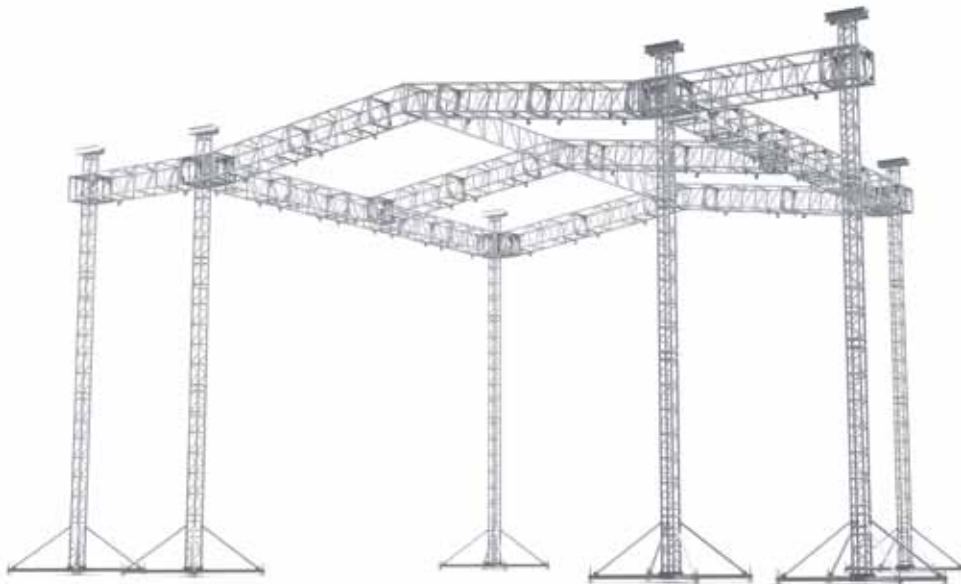


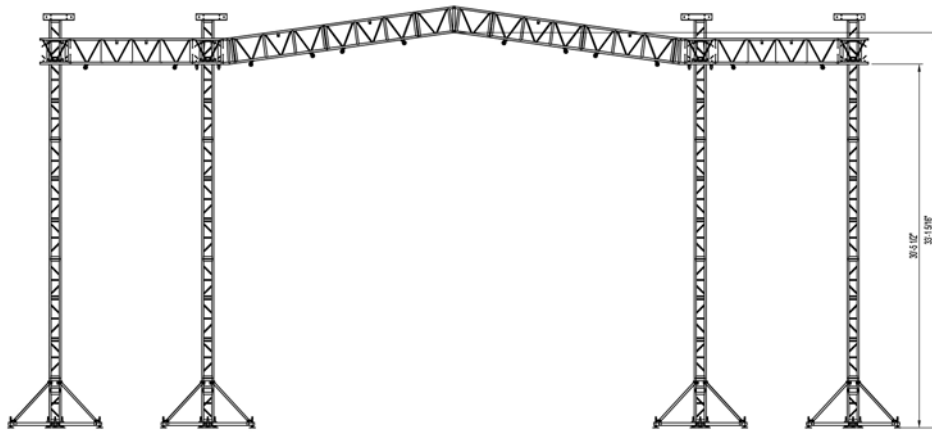
# Roofs

## PRT SUNSHADE PEAKED WITH WINGS

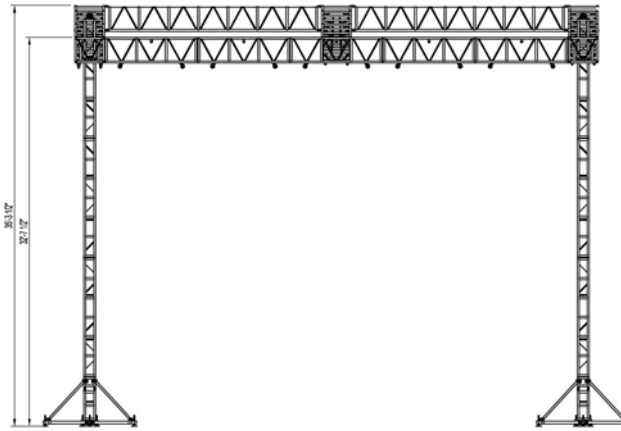
Long demanded by the touring industry, the Pre-Rig Truss (PRT) Sunshade has quickly become the favorite system for small to medium-sized productions. Designed for rapid disassembly and mobility, the PRT Sunshade may be utilized in a variety of venues. More importantly, the system is built from industry standard components like 93" Double Hung Pre-Rig Truss and Mark I Towers, which add to its versatility.

Two options are available. The "Peaked" Sunshade is patterned after our BFT, where the cross stage runs of truss are sloped approximately 5% to form a peak in the center. A canopy is attached to the components of the main body. The "Flat" Sunshade (shown below) incorporates a canopy rail system above a flat Pre-Rig Truss grid to form the roof's pitch. Both options are available with PA Wings formed with a 123" section of Double-Hung Pre-Rig Truss used to connect each downstage tower to an additional tower. It claims a safe operating wind speed of up to 40 mph and the live loads (equipment loads) that can be applied to the system include a 16,000 pound (7,258 kg) uniformly distributed load (UDL) on the main grid and a 5,000 pound (2,268 kg) speaker load on each PA Wing - making it ideal for many applications.

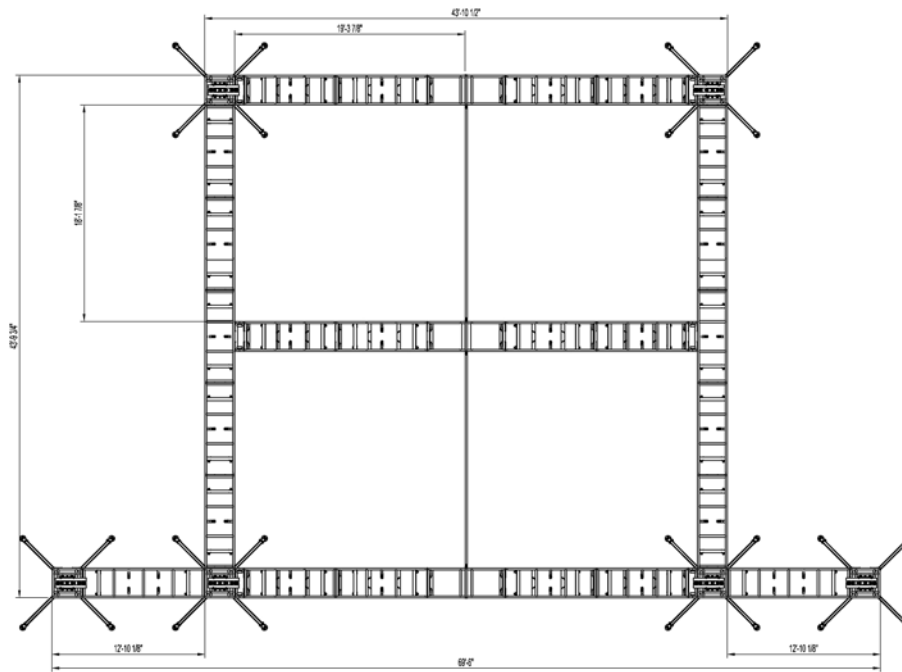




Elevation



End View



Plan