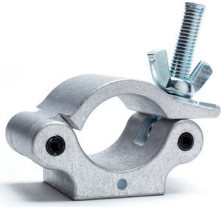


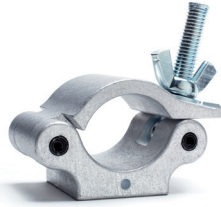
# Cell clamps



## HALF COUPLER COUNTERSUNK 3/8" HOLE

TC HCNH

SWL	Weight	Ø
1000 lbs	1.2 lbs	1.89"-2"
455 Kg	0.54 Kg	48-51 mm



## HALF COUPLER COUNTERBORED HOLE

TC HCCB

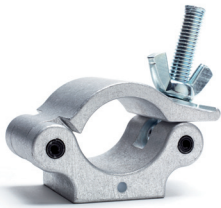
SWL	Weight	Ø
750 lbs	1.1 lbs	1.89"-2"
342 Kg	0.50 Kg	48-51 mm



## HALF COUPLER COUNTERBORED 3/8" HOLE

TC HCCS3/8

SWL	Weight	Ø
1000 lbs	1.1 lbs	1.89"-2"
455 Kg	0.50 Kg	48-51 mm



## HALF COUPLER COUNTERSUNK 1/2" HOLE

TC HCCS1/2

SWL	Weight	Ø
1000 lbs	1.2 lbs	1.89"-2"
455 Kg	0.54 Kg	48-51 mm



## FIXED 90 DEGREE COUPLER PINNED OR WELDED

TC HC90P OR HC90W

SWL	Weight	Ø
750 lbs	2.4 lbs	1.89"-2"
342 Kg	1.08 Kg	48-51 mm



## SWIVEL COUPLER

TC HCSW

SWL	Weight	Ø
750 lbs	2.4 lbs	1.89"-2"
342 Kg	1.08 Kg	48-51 mm



## CLAMP BASIC

TC CELL201

SWL	Weight	Ø
1102 lbs	1.10 lbs	1.89"-2"
500 Kg	0.50 Kg	48-51 mm



## CLAMP WITH BOLT AND WINGNUT

TC CELL202

SWL	Weight	Ø
1102 lbs	1.43 lbs	1.89"-2"
500 Kg	0.65 Kg	48-51 mm



## CLAMP WITH LIFTING EYE

TC CELL203

SWL	Weight	Ø
749 lbs	1.43 lbs	1.89" - 2"
340 Kg	0.65 Kg	48 - 51 mm
1102 lbs	1.43 lbs	1.89"-2"
500 Kg	0.65 Kg	48-51 mm



**SIDE CLAMP**

TC CELL211

SWL	Weight	Ø
1102 lbs	1.21 lbs	1.89"-2"
500 Kg	0.55 Kg	48-51 mm



**QUICK CLAMP**

TC CELL401

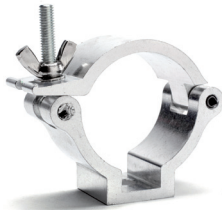
SWL	Weight	Ø
551 lbs	1.50 lbs	1.5"-2"
250 Kg	0.68 Kg	38-51 mm



**QUICK CLAMP WITH BOLT AND WINGNUT**

TC CELL402

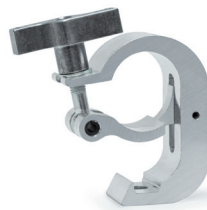
SWL	Weight	Ø
551 lbs	1.65 lbs	1.5"-2"
250 Kg	0.75 Kg	38-51 mm



**CLAMP BASIC**

TC CELL501

SWL	Weight	Ø
165 lbs	0.30 lbs	1.89"-2"
75 Kg	0.14 Kg	48-51 mm



**CLAMP BASIC**

TC CELL601

SWL	Weight	Ø
165 lbs	0.30 lbs	1.89"-2"
75 Kg	0.14 Kg	48-51 mm



**CLAMP WITH BOLT AND WINGNUT**

TC CELL602

SWL	Weight	Ø
165 lbs	0.30 lbs	1.89"-2"
75 Kg	0.14 Kg	48-51 mm