

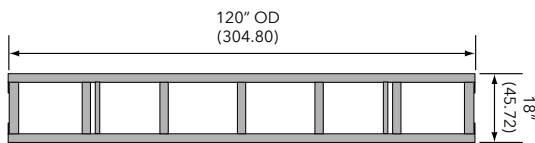
Box truss

Light duty truss 12 x 18 plated

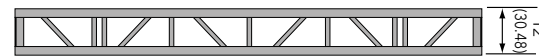
- › Light duty truss 12 x 18 plated
- › Standard lengths are 10', 8' and 5'
- › Custom lengths available upon request
- › Equipped with bolts
- › Main chords are 2" OD x 1/8" aluminum
- › Diagonals are 1" OD x 1/8" aluminum
- › Fabricated by AWS / SFL certified welders



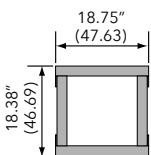
Plan Views



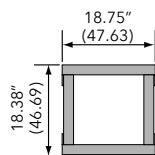
Plan



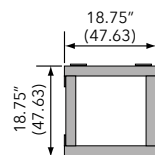
Elevation



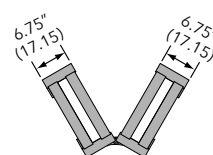
2-Way Corner Block



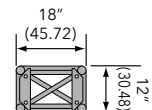
3-Way Corner Block



4-Way Corner Block



Horizontal variable corner



End View

Loading chart

Span ft (mtrs)	Maximum allowable uniform loads			Maximum allowable point loads					
	Load lbs/ft	Load lbs (kgs)	Max Defl in.	center point		third point		quarter point	
				Load lbs (kgs)	Max Defl. in.	Load lbs (kgs)	Max Defl. in.	Load lbs (kgs)	Max Defl. in.
10 (3.05)	445	4450 (2019)	0.14	2229 (1011)	0.11	1672 (758)	0.14	1115 (506)	0.13
20 (6.09)	105	2100 (953)	0.54	1058 (480)	0.44	794 (360)	0.56	529 (240)	0.52
30 (9.14)	42	1260 (572)	1.20	643 (292)	1.02	482 (219)	1.25	322 (146)	1.17
40 (12.21)	20	800 (363)	2.11	417 (189)	1.86	312 (142)	2.21	208 (94)	2.10

Note: Deflections reported in the tables on the left are the maximum expected for full loadings (indoors only). All loads are based on 10' (3.05 m) sections. Other section lengths are available. Load tables are reprinted from engineering reports developed by Parkhill, Smith & Cooper, Inc., structural engineers, and apply to truss fabricated after December 1989.

Light duty truss 12 x 18 plated Connections are single sets of bolts

Product Description	Item Code	Weight lbs (kgs)	
5 FT LIGHT DUTY PLATED TRUSS	TC 1218-060B	39	(18)
8 FT LIGHT DUTY PLATED TRUSS	TC 1218-096B	57	(26)
10 FT LIGHT DUTY PLATED TRUSS	TC 1218-120B	67	(30)
LIGHT DUTY PLATED 2-WAY CORNER BLOCK	TC 1218-C2B	19	(9)
LIGHT DUTY PLATED 3-WAY CORNER BLOCK	TC 1218-C3B	21	(10)
LIGHT DUTY PLATED 4-WAY CORNER BLOCK	TC 1218-C4B	25	(11)
LIGHT DUTY PLATED BLOCK VERT. (center pivot)	TC 1218-AVB	29	(13)
LIGHT DUTY PLATED VARIABLE CORNER VERT. (book style with brace pivot)	TC 1218-VVB	30	(13)