



# Area Four Industries

## North American Product Portfolio

May 2025



# Who Is Area Four Industries

Area Four Industries is the world's largest manufacturer of aluminum trussing and staging systems, servicing our clients via our industry-leading brands:

TOMCAT, JAMES THOMAS ENGINEERING (JTE), MILOS, PROLYTE, LITEC and EXE TECHNOLOGY. Area Four Industries operates an extensive global production network via major facilities and design and distribution centers located strategically around the world to provide close support to key regions and specialist market sectors.

Our products are used in a wide range of industries and environments, from the construction of eye-catching events and productions to the largest imaginable performance stages for concerts and mega-events worldwide. Our latest range of EXE TECHNOLOGY automation products are trusted globally by the largest production companies and artists on the planet.

Whatever the project, wherever in the world, we have a solution from our brand portfolio of products within the Area Four Industries group.



<b>TOMCAT</b>	<b>4</b>
Truss   Roofs and PA Towers   Custom Fabrication   Crowd Barriers   Training	
<b>James Thomas Engineering</b>	<b>12</b>
Truss	
<b>Milos</b>	<b>14</b>
Truss   Roofs, LED Screen Support Systems & PA Towers   Cell Clamps	
<b>Prolyte</b>	<b>18</b>
LSU Indoor LED Screen Support System   Verto Truss	
<b>EXE Technology</b>	<b>22</b>
EXE ACE & RISE Electric Chain Hoists   EXE Dynamic Stack Tracks (DST)   EXE Flexa Wireless Load Sensing	
<b>Mobiltechlift</b>	<b>26</b>
Telescopic, Line Array & Multipurpose Lifts	
<b>A4I.tv</b>	<b>28</b>
Rigging & Trussing Television	



TOMCAT<sup>4</sup>

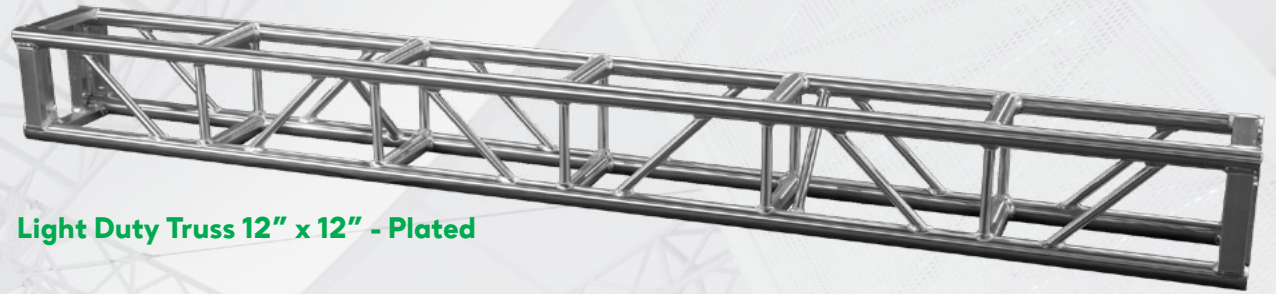


[www.tomcatglobal.com](http://www.tomcatglobal.com)

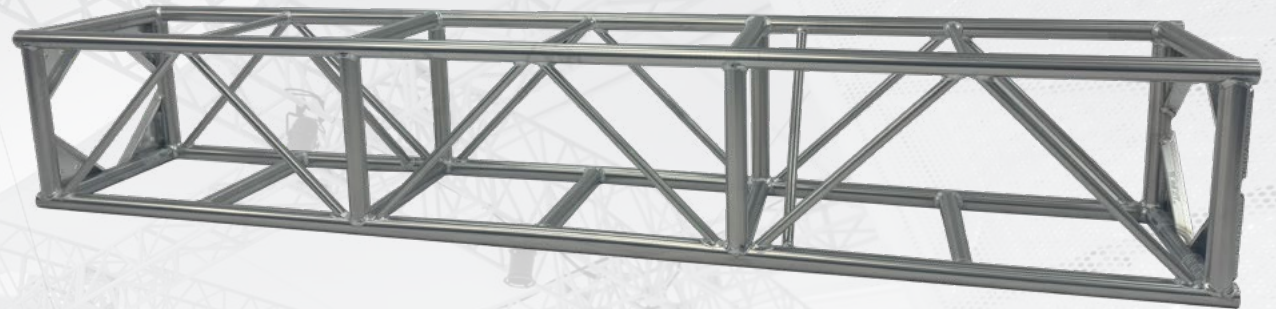
# Truss

The  
industry  
standard  
since 1987

12" x 12" nut & bolt  
connection through  
54" x 36" spigoted,  
aluminum & steel.



Light Duty Truss 12" x 12" - Plated



Medium Duty Truss 20.5" x 20.5" - Plated



Tura Pre-Rig Truss  
14" x 24" - Spigoted

tura  
by TOMCAT<sup>4</sup>

TOMCAT<sup>4</sup>

# TOMCAT DEX



TOMCAT DEX is available in a wide range of deck shapes and sizes with the most popular being the industry standard 8' x 4' (2.44 x 1.22 m) size. Each deck is finished with a matte black painted  $\frac{1}{16}$ " (18 mm) thick plywood walking surface, however other surface finishes are available including clear acrylic and aluminum grating. The plywood top can easily be user replaced, repaired, and repainted in case of damage or wear.

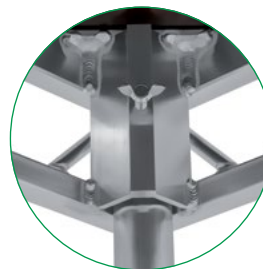
Each deck is provided with four leg pockets to accommodate up to a 2" (51 mm) outside diameter round leg at each corner while also providing compatibility with other tubular leg sizes such as  $1\frac{1}{2}$ " schedule 40 pipe.

Deck to deck and deck to accessory connections are made via simple and cost-effective nut and bolts, while multiple connection holes provide connectability with other industry deck systems.

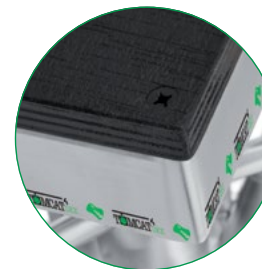
With the 8' x 4' deck weighing only 106 lbs. it is almost  $\frac{1}{3}$  lighter than existing steel decking systems yet providing system connectability and similar loading capabilities.



Deck top is a smooth, matte black painted surface



Leg pocket system



Deck top fixing

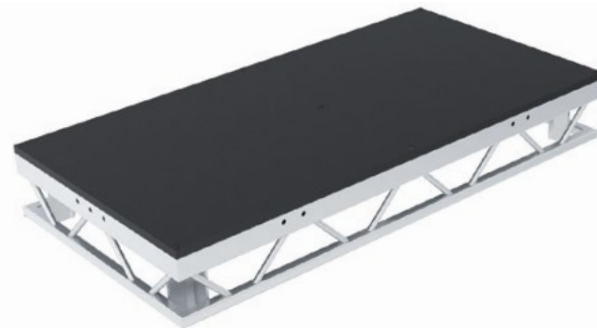
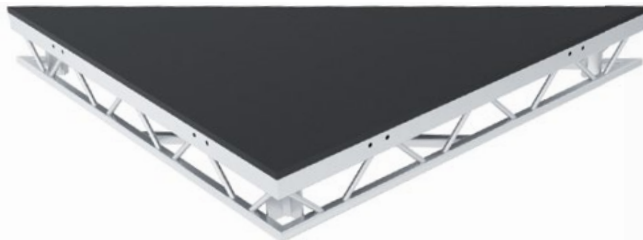


Cross section of profile

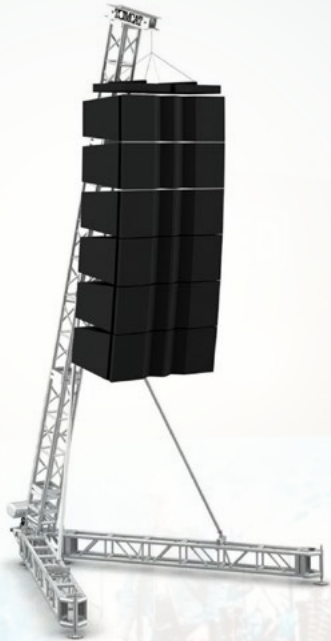


Deck connection point

## Various deck, leg and gates sizes available



# Roofs and PA Towers



From county fairs to the largest festivals, TOMCAT has the outdoor structures you need.



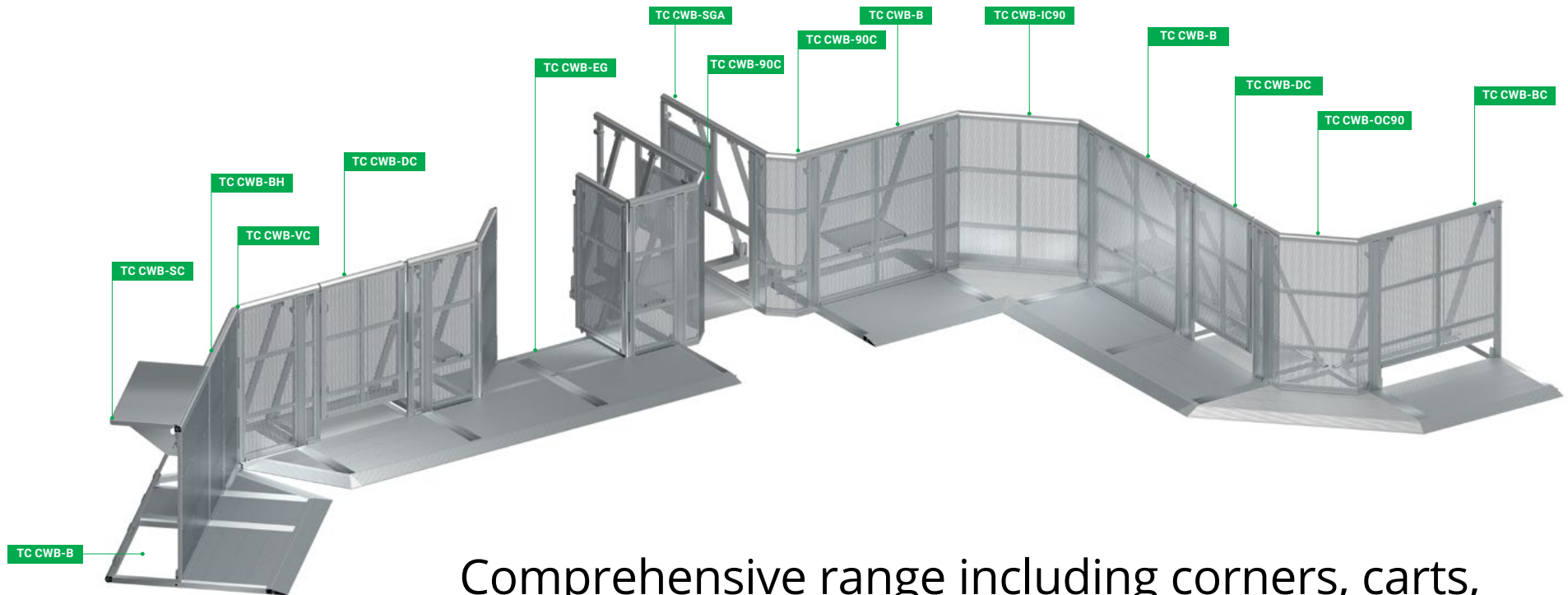
# Custom Fabrication



Full US-based custom fabrication capability inc. design & engineering.



# Crowd Barriers



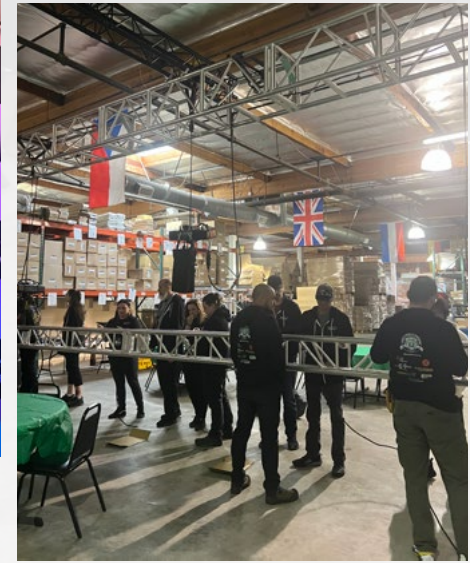
Comprehensive range including corners, carts, truck gates, checkpoints and emergency gates.

# Training

TOMCAT U:  
Truss & Rigging Workshop  
[www.tomcatuniversity.com](http://www.tomcatuniversity.com)



TOMCAT<sup>4</sup>  
CLASS OF 2024  
THOUSAND OAKS





**James Thomas  
Engineering**

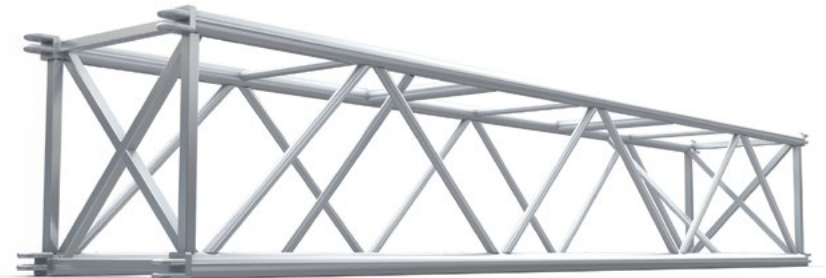


**[www.jthomaseng.com](http://www.jthomaseng.com)**

# Truss

Industry founding nut  
& bolt connection &  
SuperTruss.

Range of sizes from 12" x 12"  
to 36" x 36" SuperMega Truss



SuperTruss 20.5 x 20.5



General Purpose Truss 15 x 15



SuperMega Truss 500 x 1000



Milos. Works better.



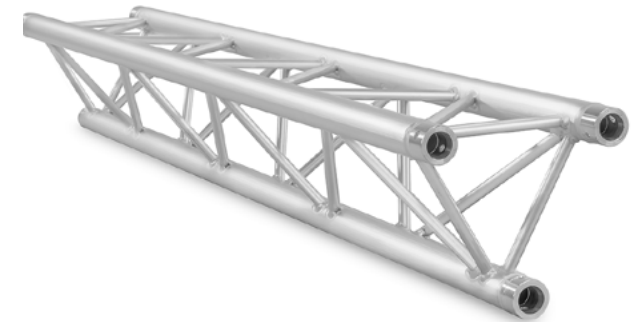
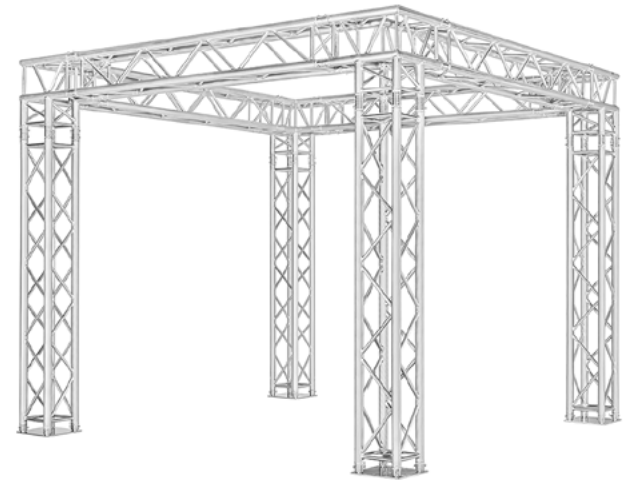
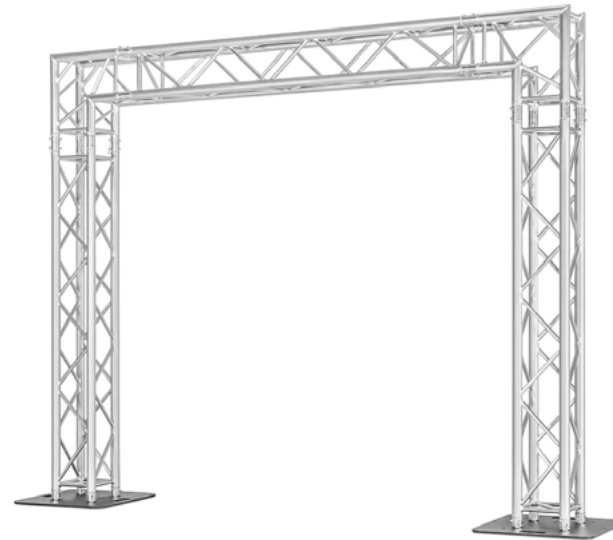
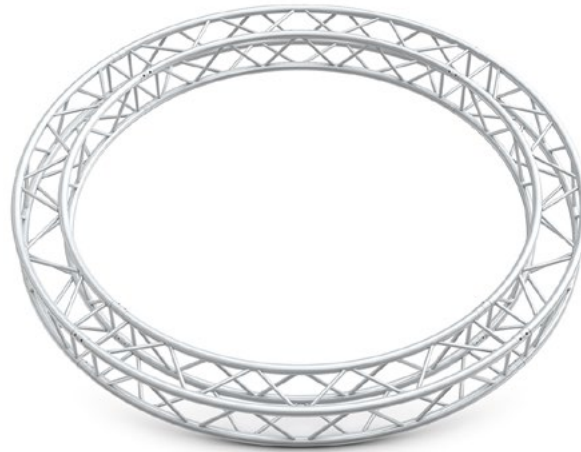
[www.milos-systems.com](http://www.milos-systems.com)

# Truss

Conical  
connection  
truss products  
with industry  
standard  
connectability.

---

Wide range of sizes  
& capacities from  
222 x 222 mm to  
390 x 390 mm in Duo,  
Trio & Quatro formats.



# Roofs, LED Screen Support Systems & PA Towers



MT-PA5030 PA Tower  
(15ft Trim)



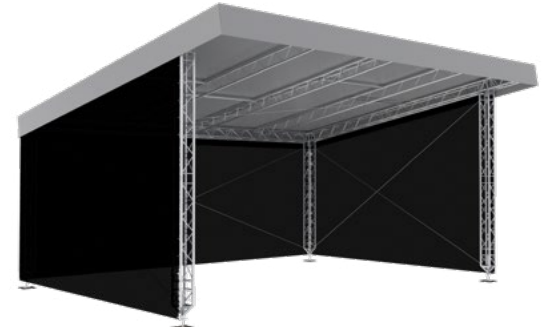
LSG1 Outdoor LED Screen Support Structure  
(up to 6m x 4m Screen Size)



LSG0 Outdoor LED Screen Support Structure  
(up to 6m x 4m Screen Size)



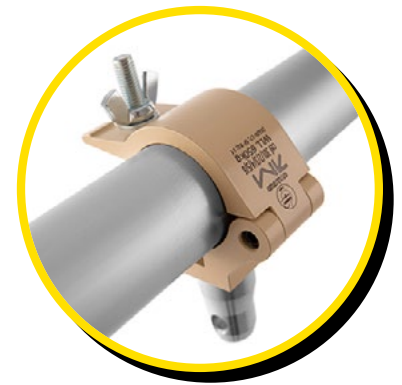
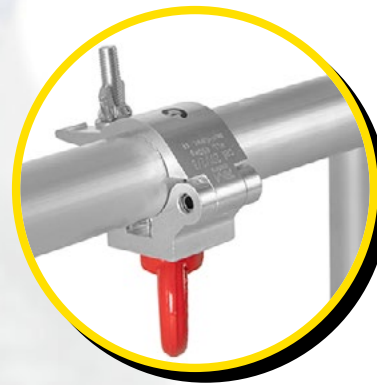
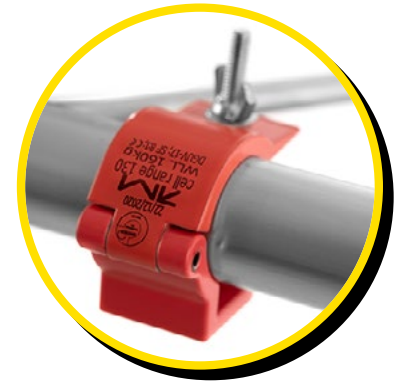
MR1 Arched Outdoor Roof System  
(26' x 20' & 20' x 13' Sizes Available)



MR0 Sloping Outdoor Roof System  
(26' x 20' & 20' x 13' Sizes Available)

# Cell Clamps

Natural aluminum, black anodized and powder coated versions available. Wide range of clamp styles and tube diameter types available from stock.

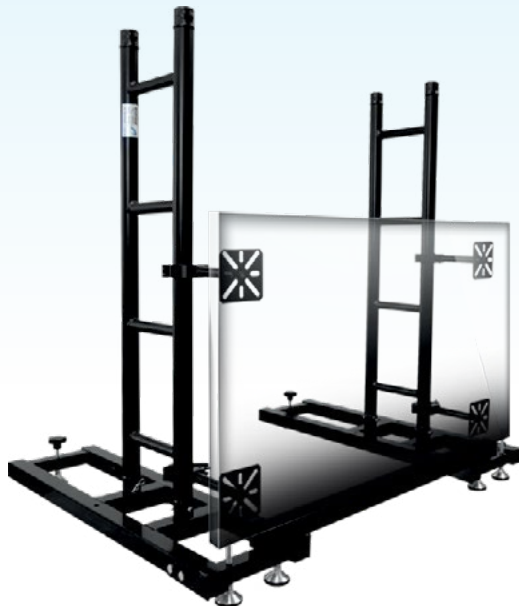




[www.prolyte.com](http://www.prolyte.com)

# LSU Indoor LED Screen Support System

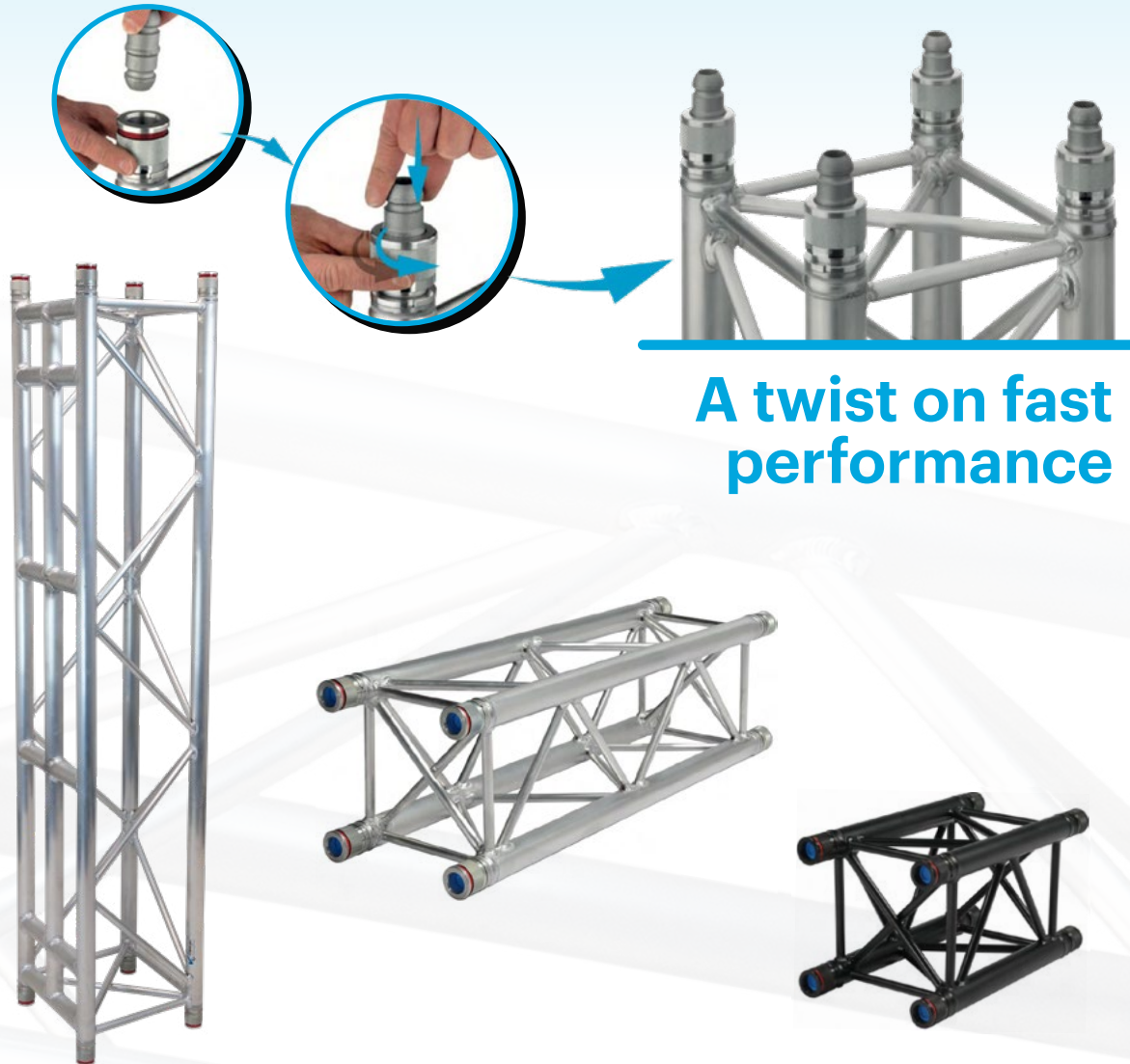
The Prolyte LSU system will support up to a 6m tall straight or curved LED screen of any width, with the option for the screen to be raised if required.



# Verto Truss

The Verto truss is a revolutionary system, making truss connections fast, silent and safe.

The Verto truss brings a totally new perspective on truss assembly and is described as a game changer in our industry.



**A twist on fast performance**

# Verto Truss

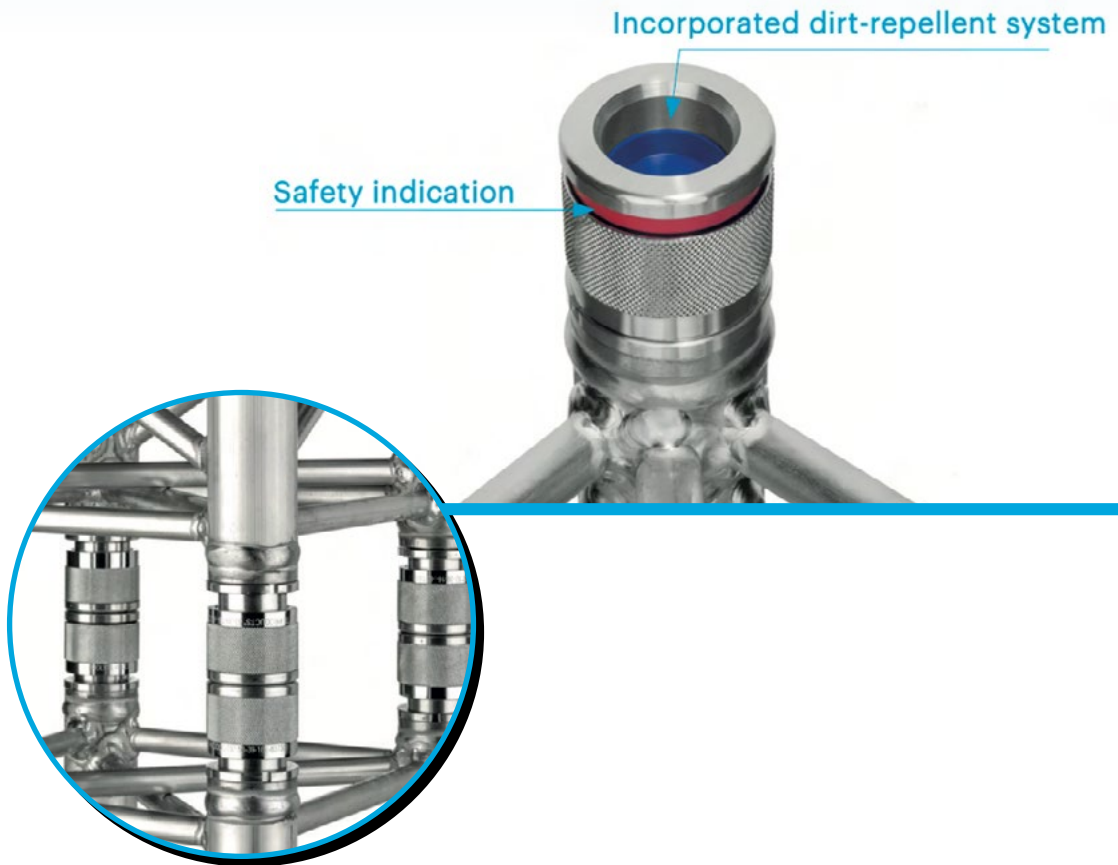
10 x faster assembly time  
than conventional nut & bolt  
connection truss.

## Available Sizes

H30V - 289 x 289 mm

H40V - 389 x 389 mm

H40R - 389 x 289 mm





# EX3

TECHNOLOGY



[www.exetechnology.com](http://www.exetechnology.com)

# EXE ACE & RISE Electric Chain Hoists

1½T to 2½T capacity electric chain hoists rated for D8 and D8+, with fixed and variable speed options available.



**EXE**  
ACE

**EXE Ace D8 500kg  
Medium Frame Compact**



**EXE**  
ACE

**EXE Ace D8 1000kg  
Medium Frame Chain Hoist**



**EXE**  
RISE

**EXE Rise D8+ 1000kg  
Large Frame Chain Hoist**

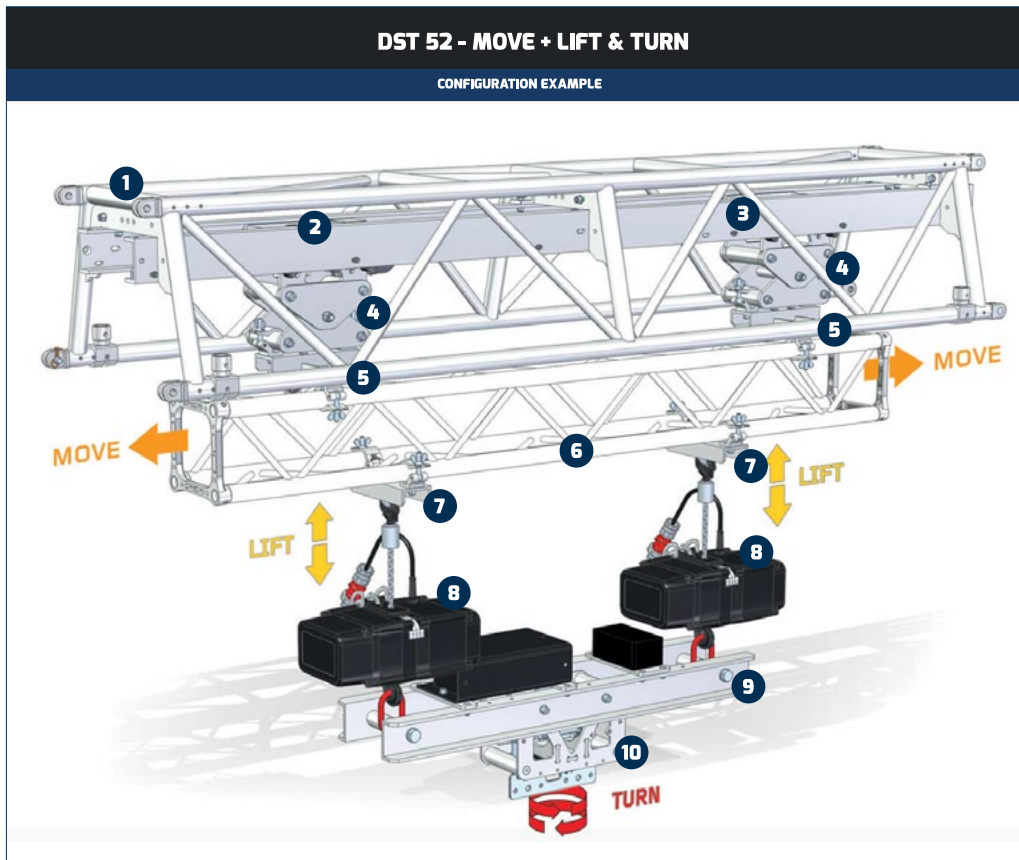











**EXE**  
VARIO

**EXE Vario D8+ 500kg  
Chain Hoist**

# EXE Dynamic Stack Tracks (DST)

The modular DST System consists of truss sections with an integrated rail system, together with a series of motorized carriage modules that mount inside the truss and travel along the rails.



LEGEND - CONFIGURATION MOVE + LIFT & TURN					
					
1x LT STK52R TRUSS	1x LT STK52MT WLL 600kg Towing capacity 1800kg Speed @ 50Hz 10m/min	1x LT STK52MS WLL 600kg	2x LT STK52-KD13	2x LT C03025	1x LT QX305A
					
2x LT C030	2x Chain Hoist	1x LT STKMR140Z1 TO JOIN WITH above 2x Hoists under LT STK52MR3	1x LT STK52MAR 1x LT STK52MR3 WLL 900kg		

# EXE Flexa Wireless Load Sensing

The EXE Flexa range of load cells provides wireless load monitoring up to 5T in capacity.





**mobiltchliffts<sup>4</sup>**



**[www.mobiltchliffts.com](http://www.mobiltchliffts.com)**

# Telescopic, Line Array & Multipurpose Lifts

The ML2 Telescopic Lift is available in two different working heights and is engineered to safely lift 440 Lbs. (200 Kg) to a maximum height of over 21ft (6.5m).

The ML3 Line Array Lift will support over 570 Lbs. (260 Kg) to a maximum height of over 18ft (5.6m). The lift is designed with a secondary safety system when lifting.

The ML4 Multi Purpose Lift will support over 590 Lbs. (270 Kg) to a maximum height of over 21ft (6.5m). The lift is perfect for supporting truss and can be transported horizontally or vertically.



**ML2 Telescopic Lift**



**ML3 Line Array Lift**



**ML4 Multi Purpose Lift**

Categories

- Design Basics (3)
- Educational (32)
- On-site videos (29)
- Product basics (73)
- Rigging basics (25)

Uncategorized (2)

Velvet Backstage (17)

Your videos (6)

*Commandos*

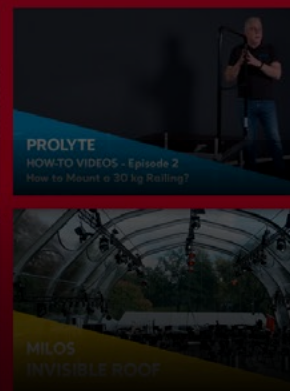
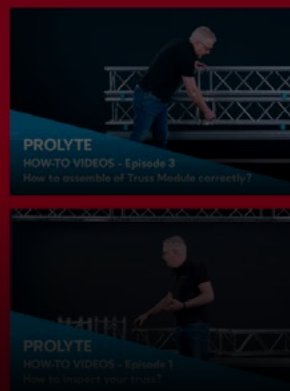
Commandos

For Laptop

LATEST TRUSSING & RIGGING VIDEOS



MORE



**A4I.tv**

**Rigging  
Trussing  
Television**



**www.a4i.tv**

Recommended Series



**Basic of Rigging**

11 Episodes  
MARCH 2, 2022



**Truss Connectors**

2 Episodes  
AUGUST 20, 2019



**Truss Engineering**

4 Episodes  
MAY 22, 2019



**Rigging Basics**

# A4i.tv - Rigging & Trussing Television

A4i.tv is the world's first website dedicated to educational and informative videos focused on the rigging and staging industry.

The screenshot displays the A4i.tv website interface. At the top, the logo "A4i.tv Rigging Trussing Television" is on the left, and a search bar "Search for videos..." is on the right. Below the logo, navigation links include "HOME", "CATEGORIES", "OUR BRANDS", "RIGGING COMMANDOS", "SERIES", and "YOUR VIDEOS".

On the left side, a "Categories" sidebar lists:

- Design Basics (3)
- Educational (32)
- On-site videos (29)
- Product basics (73)
- Rigging basics (25)
- Uncategorized (2)
- Velvet Backstage (17)
- Your videos (6)

The main content area features a "LATEST TRUSSING & RIGGING VIDEOS" section with a grid of video thumbnails. The first large thumbnail is titled "PROLYTE HOW-TO VIDEOS - Episode 4 What is Verto truss?". Other thumbnails include "PROLYTE HOW-TO VIDEOS - Episode 3 How to assemble a Truss Module correctly?", "PROLYTE HOW-TO VIDEOS - Episode 2 How to Mount a 30 kg Rolling?", "PROLYTE HOW-TO VIDEOS - Episode 1 How to Support your truss?", and "MILOS INVISIBLE ROOF".

Below this is an "EDUCATIONAL VIDEOS" section. On the right, a "Recommendations" sidebar shows:

- A video by Adrian Forbes-Black titled "STKR".
- A video by Eric Porter titled "Risk Assessment".
- A video titled "MILOS INVISIBLE ROOF".

At the bottom right, the A4i.tv logo is displayed.



Data valid as of May 6, 2025



**TOMCAT USA, Inc.**  
5427 N. National Dr.  
Knoxville, TN 37914

[www.tomcatglobal.com](http://www.tomcatglobal.com)  
[sales@tomcatusa.com](mailto:sales@tomcatusa.com)  
**1-800-298-7877**

[www.a4direct.us](http://www.a4direct.us)  
[info@a4direct.us](mailto:info@a4direct.us)  
**1-800-411-0065**

**West Coast Sales Office & Warehouse**  
950 Lawrence Dr. Suite B  
Thousand Oaks, CA 91320

