

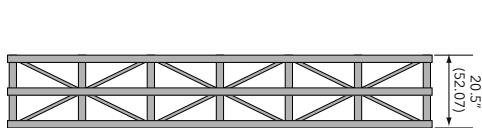
Triangle truss

Fixed triangle truss 20.5 plated

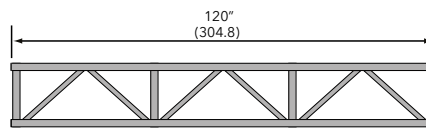
- › Fixed triangle truss 20.5 plated
- › Standard lengths are 10', 8' and 5'
- › Custom lengths available upon request
- › Equipped with bolts
- › Main chords are 2" OD x 1/8" aluminum
- › Diagonals are 1" OD x 1/8" aluminum
- › Fabricated by AWS / SFL certified welders



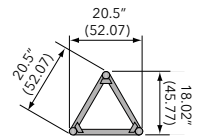
Plan Views – Connector Orientation Specified by Customer



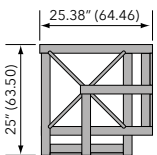
Plan



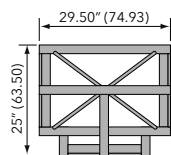
Elevation



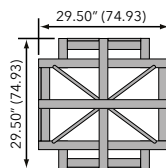
End View



2-Way Corner Block



3-Way Corner Block



4-Way Corner Block

Loading chart

| Span feet (meters) | Maximum allowable uniform loads | | | Maximum allowable point loads | | | | | |
|--------------------|---------------------------------|----------------|--------------|--------------------------------|---------------|-------------------------------|---------------|---------------------------------|---------------|
| | Load lbs/ft | Load lbs (kgs) | Max Defl in. | center point Load lbs (kgs) | Max Defl. in. | third point Load lbs (kgs) | Max Defl. in. | quarter point Load lbs (kgs) | Max Defl. in. |
| 10 (3.05) | 287 | 2870 (1302) | 0.05 | 1569 (712) | 0.05 | 1177 (534) | 0.06 | 784 (356) | 0.05 |
| 20 (6.09) | 74 | 1480 (671) | 0.22 | 747 (339) | 0.18 | 560 (254) | 0.23 | 373 (169) | 0.22 |
| 30 (9.14) | 30 | 900 (408) | 0.50 | 456 (207) | 0.42 | 342 (155) | 0.52 | 228 (103) | 0.49 |

5/8" diameter Grade 8 Bolts with standard washers through 3/8" gusset plates

Note: Deflections reported in the tables on the left are the maximum expected for full loadings (indoor only). All loads are based on 10' (3.05 m) sections. Other section lengths are available. Load tables are reprinted from engineering reports developed by Parkhill, Smith & Cooper, Inc., Structural Engineers, and apply to truss fabricated after December 1989.

Fixed triangle truss 20.5 plated Connections are single sets of bolts

| Product Description | Item Code | Weight lbs (kgs) |
|-----------------------------------|--------------|------------------|
| 5 FT FIXED TRIANGLE TRUSS | TC 20FX-060B | 40 (18) |
| 8 FT FIXED TRIANGLE TRUSS | TC 20FX-096B | 56 (25) |
| 10 FT FIXED TRIANGLE TRUSS | TC 20FX-120B | 62 (28) |
| FIXED TRIANGLE 2-WAY CORNER BLOCK | TC 20FX-C2B | 27 (12) |
| FIXED TRIANGLE 3-WAY CORNER BLOCK | TC 20FX-C3B | 35 (16) |
| FIXED TRIANGLE 4-WAY CORNER BLOCK | TC 20FX-C4B | 43 (20) |