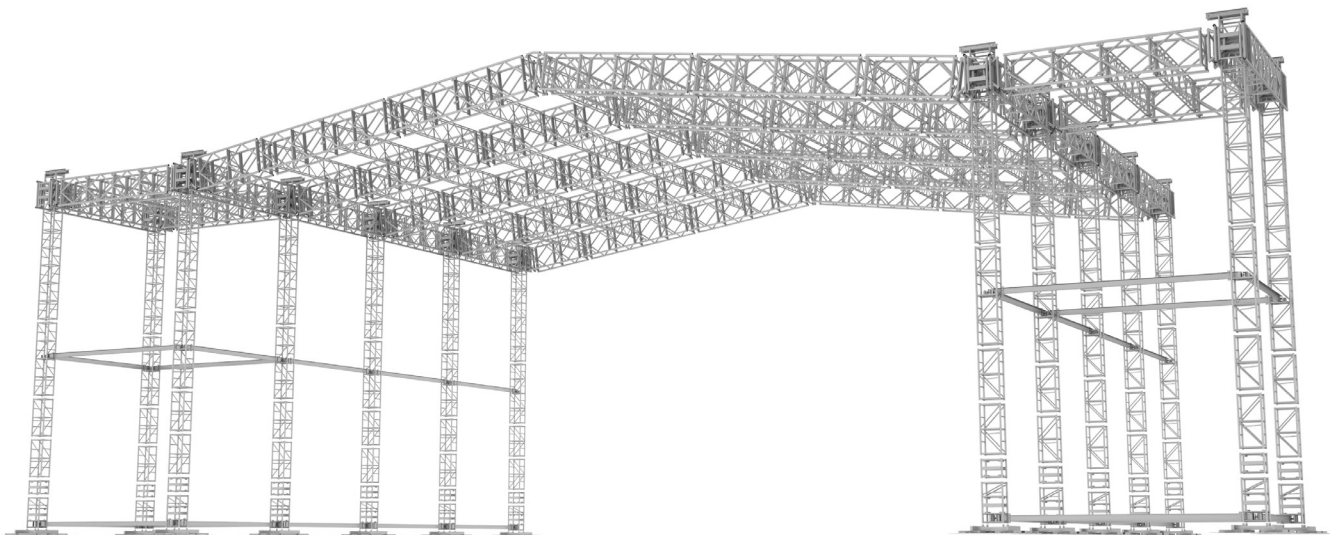
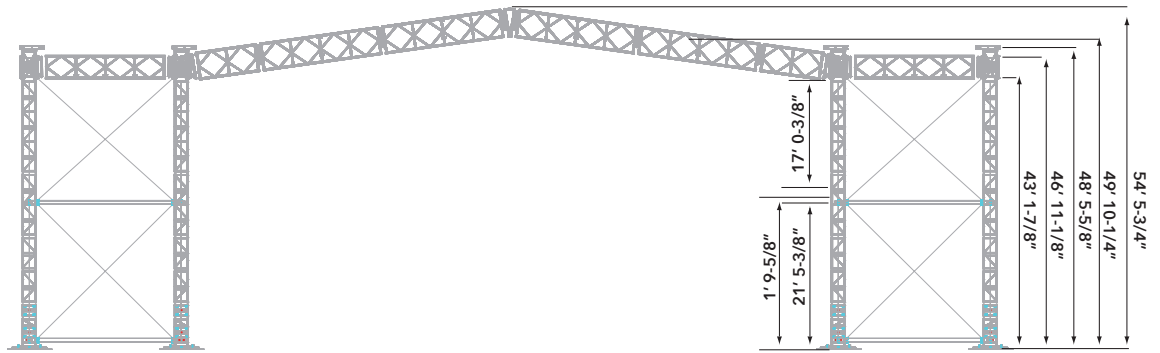


Outdoor roof systems

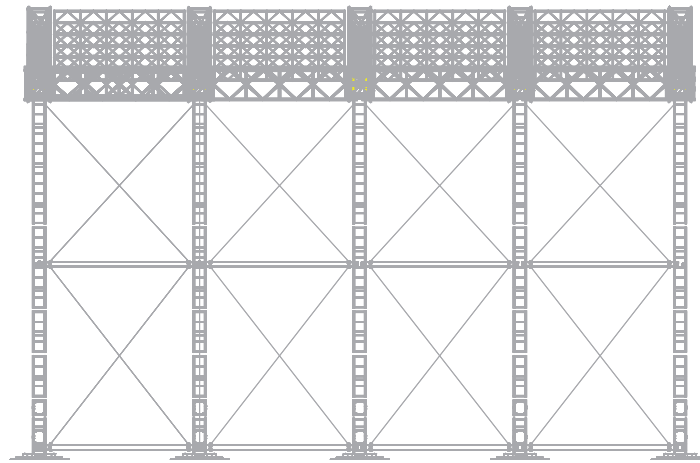
KT-7 100 x 80 Roof system with PA wings

Raised on 22-1/2" towers, and with 20' x 20' PA wings on each side, this roof system provides customers with an unobstructed opening of over 100' (30.48 m) and a depth of 60' (18.28 m). The grid is made up of folding 31" x 54" truss, with truss ladders providing the up-stage/down-stage part of the grid. This provides for a dramatically reduced size for transport. The maximum uniformly distributed load for the KT-7 system as shown is 140,000 pounds (63,503 kg) and 20,000 pounds (9,072 kg) max. load per wing. The system is shown here with a roof peak incorporated into the design, but is also available in a flat configuration to meet each customer's specific needs. It provides a safe operating wind speed of up to 67 mph. The required guy wires for outdoor applications are not shown.

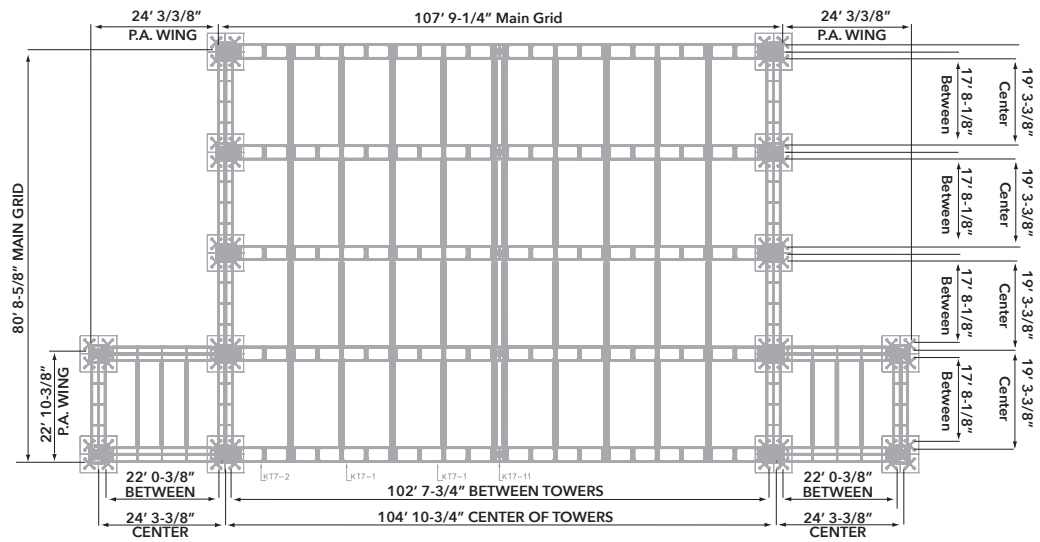




Elevation



End View



Plan