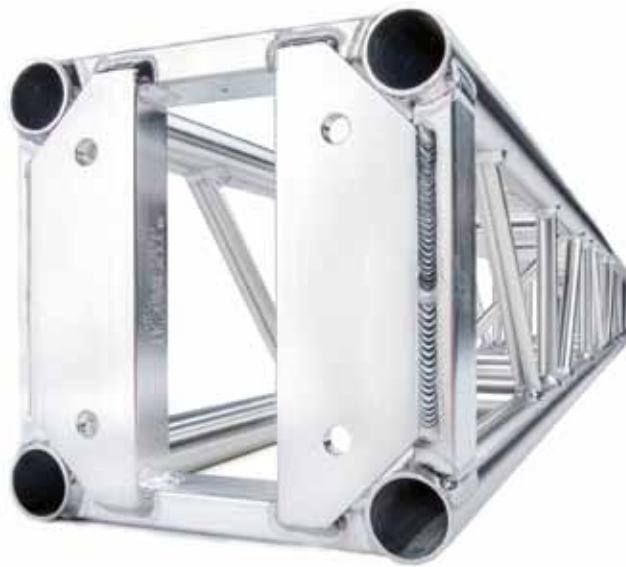


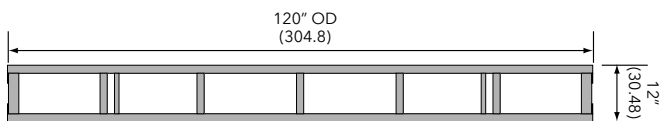
Box truss

Light-duty truss 12 x 12 plated

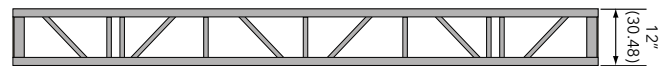
- › Light-duty truss 12 x 12 plated
- › Standard lengths are 10', 8', 6', 5', 4', 3', 2.5', 2'
- › Custom lengths available upon request
- › Equipped with bolts
- › Main chords are 2" OD x 1/8" aluminum
- › Diagonals are 1" OD x 1/8" aluminum
- › Fabricated by AWS / SFL certified welders



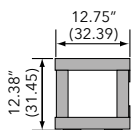
Plan Views



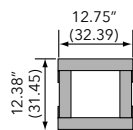
Plan



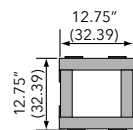
Elevation



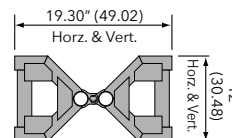
2-Way Corner Block



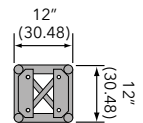
3-Way Corner Block



4-Way Corner Block



Horizontal Variable Corner



End View

Loading chart

Span feet (meters)	Maximum allowable uniform loads			Maximum allowable point loads					
	Load lbs/ft	Load lbs (kgs)	Max Defl. in.	center point Load lbs (kgs)	Max Defl. in.	third point Load lbs (kgs)	Max Defl. in.	quarter point Load lbs (kgs)	Max Defl. in.
10 (3.05)	446	4460 (2023)	0.14	2231 (1012)	0.11	1673 (759)	0.14	1116 (506)	0.13
20 (6.09)	106	2120 (962)	0.54	1063 (482)	0.44	797 (362)	0.56	531 (241)	0.52
30 (9.14)	43	1290 (585)	1.22	650 (295)	1.01	487 (221)	1.25	325 (147)	1.17
40 (12.21)	21	840 (381)	2.16	426 (193)	1.85	319 (145)	2.21	213 (97)	2.10

Note: Deflections reported in the tables on the left are the maximum expected for full loadings (indoor only). All loads are based on 10' (3.05 m) sections. Other section lengths are available. Load tables are reprinted from engineering reports developed by Parkhill, Smith & Cooper, Inc., Structural Engineers, and apply to truss fabricated after December 1989.

Light-Duty truss 12 x 12 plated Connections are single sets of bolts

Product Description	Item Code	Weight lbs (kgs)
2 FT LIGHT-DUTY PLATED TRUSS	TC 1212-024B	20 (9)
2.5 FT LIGHT-DUTY PLATED TRUSS	TC 1212-030B	24 (11)
3 FT LIGHT-DUTY PLATED TRUSS	TC 1212-036B	26 (12)
4 FT LIGHT-DUTY PLATED TRUSS	TC 1212-048B	33 (15)
5 FT LIGHT-DUTY PLATED TRUSS	TC 1212-060B	36 (16)
6 FT LIGHT-DUTY PLATED TRUSS	TC 1212-072B	42 (19)
8 FT LIGHT-DUTY PLATED TRUSS	TC 1212-096B	51 (23)
10 FT LIGHT-DUTY PLATED TRUSS	TC 1212-120B	61 (28)
LIGHT-DUTY PLATED 2-WAY CORNER BLOCK	TC 1212-C2B	16 (7)
LIGHT-DUTY PLATED 3-WAY CORNER BLOCK	TC 1212-C3B	20 (9)
LIGHT-DUTY PLATED 4-WAY CORNER BLOCK	TC 1212-C4B	22 (10)
LIGHT-DUTY PLATED 5-WAY CORNER BLOCK	TC 1212-C5B	26 (12)
LIGHT-DUTY PLATED 6-WAY CORNER BLOCK	TC 1212-C6B	28 (13)
LIGHT-DUTY PLATED HORIZ. ARTICULATING BLOCK	TC 1212-AHB	24 (11)
LIGHT-DUTY PLATED VERT. ARTICULATING BLOCK	TC 1212-AVB	24 (11)
LIGHT-DUTY PLATED VARIABLE HORIZ. BLOCK	TC 1212-VHB	22 (10)
LIGHT-DUTY PLATED VARIABLE VERT. BLOCK	TC 1212-VVB	22 (10)