

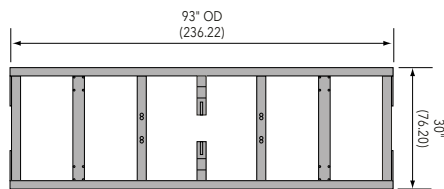
Touring truss

Double hung pre-rig truss 26 x 30 plated

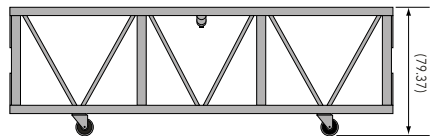
- › Double hung pre-rig truss 26 x 30 plated
- › Standard lengths are 63", 93" and 123"
- › Equipped with bolts
- › Main chords are 2" OD x 1/8" aluminum
- › Diagonals are 1" OD x 1/8" aluminum
- › Fabricated by AWS / SFL certified welders



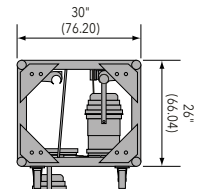
Plan Views



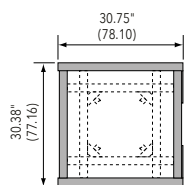
Plan



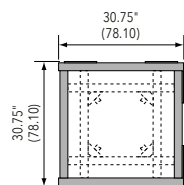
Elevation



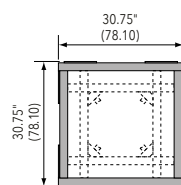
End View



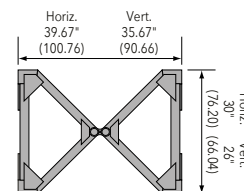
2-Way Corner Block



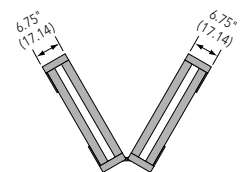
3-Way Corner Block



4-Way Corner Block



Center Pivot Horiz. Articulating Block



Horizontal Variable Corner

Loading chart

Span feet (meters)	Maximum allowable uniform loads			Maximum allowable point loads					
	Load lbs/ft	Load lbs (kgs)	Max Defl in.	center point	Max Defl. in.	third point	Max Defl. in.	quarter point	Load lbs (kgs)
7' - 9" (2.35)	1135	8796 (3990)	0.02	8248 (3741)	0.03	4400 (1996)	0.03	2933 (1330)	0.03
15' - 6" (4.72)	525	8137 (3691)	0.16	4070 (1846)	0.13	3052 (1384)	0.17	2035 (923)	0.16
23' - 3" (7.04)	228	5301 (2405)	0.37	2653 (1203)	0.30	1990 (903)	0.38	1327 (602)	0.35
31' - 0" (9.44)	124	3844 (1744)	0.65	1927 (874)	0.53	1445 (655)	0.67	963 (437)	0.62
38' - 9" (11.80)	76	2945 (1336)	1.02	1477 (670)	0.84	1107 (502)	1.04	738 (335)	0.97
46' - 6" (14.17)	50	2325 (1055)	1.47	1164 (528)	1.22	873 (396)	1.50	582 (264)	1.41
54' - 3" (16.52)	34	1844 (836)	1.98	931 (422)	1.68	698 (317)	2.03	466 (211)	1.92

5/8" diameter Grade 8 Bolts with standard washers through 3/8" gusset plates

Note: Deflections reported in the tables on the left are the maximum expected for full loadings (indoor only). All loads are based on 10' (3.05 m) sections. Other section lengths are available. Load tables are reprinted from engineering reports developed by Parkhill, Smith & Cooper, Inc., Structural Engineers, and apply to truss fabricated after December 1989.

Double hung pre-rig truss 26 x 30 plated End plates equipped for double sets of bolts, supplied with one set only

Product Description	Item Code	Weight lbs (kgs)
63" PRT TRUSS (EMPTY)	TC 2630-063B	90 (41)
93" PRT TRUSS (EMPTY)	TC 2630-093B	109 (49)
123" PRT TRUSS (EMPTY)	TC 2630-123B	131 (60)
PRT 2-WAY CORNER BLOCK	TC 2630-C2B	40 (18)
PRT 3-WAY CORNER BLOCK	TC 2630-C3B	46 (21)
PRT 4-WAY CORNER BLOCK	TC 2630-C4B	51 (23)
PRT 2-WAY SLEEVE FOR 12" TOWER	TC 2630-S2B	73 (33)
PRT 3-WAY SLEEVE FOR 12" TOWER	TC 2630-S3B	79 (36)
PRT 4-WAY SLEEVE FOR 12" TOWER	TC 2630-S4B	84 (38)