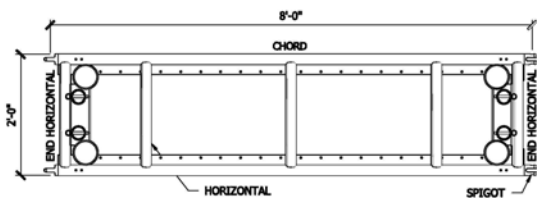


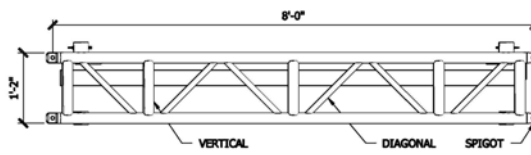
# Touring truss

## Nemesis 14 x 24 Spigoted aluminum Box truss

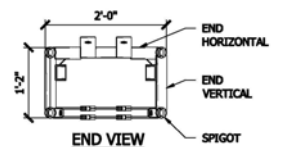
Nemesis utilizes the popular touring 14"x24" truss profile and features an end loading system that allows a single technician to prep a section of truss in the shop prior to shipping.



Plan



Elevation



End View

## Loading chart

Span feet (meters)	Maximum allowable uniform loads			Maximum allowable point loads					
	Load lbs/ft	Load lbs (kgs)	Max Defl. in.	center point	Max Defl. in.	third point	Max Defl. in.	quarter point	Load lbs (kgs)
8 (2.44)	920	7360 (3345)	0.05	7135 (3236)	0.09	3680 (1669)	0.08	2453 (1112)	0.07
16 (4.88)	431	6896 (3134)	0.43	3450 (1564)	0.35	2587 (1173)	0.44	1725 (782)	0.41
24 (7.32)	181	4344 (1974)	0.97	2169 (983)	0.80	1626 (737)	1	1084 (491)	0.93
32 (9.75)	93	2976 (1352)	1.75	1489 (675)	1.48	1117 (506)	1.79	744 (337)	1.69
40 (12.20)	52	2080 (945)	2.77	1049 (475)	2.4	713 (323)	2.66	516 (243)	2.67
48 (14.60)	27	1296 (589)	3.85	563 (255)	3.2	327 (148)	3.19	237 (107)	3.2

Spigots Only

## Nemesis 14"x24" Connections are steel spigots & 3/4" clevis pins

Product Description	Item Code	Weight lbs (kgs)
8FT NEMESIS TRUSS	TC NEME-096S	177 (81)
10FT NEMESIS TRUSS	TC NEME-120S	192 (87)
2" ROUND TUBE LIGHT MOUNTING BRACKET	TC NEME-LB-2RT	12 (6)
2" X 1" BOX TUBE LIGHT MOUNT BRACKET	TC NEME-LB-2X1	12 (6)
2" X 2" BOX TUBE LIGHT MOUNT BRACKET	TC NEME-LB-2X2	13 (6)
2" TUBE DROP MOUNT BRACKET	TC NEME-LB-DROP	14 (7)
SNAP BRACE LIGHT MOUNT BRACKET	TC NEME-SB	12 (6)
NEMESIS TRUSS STAND	TC NEME-STND	13 (6)
3/4" CLEVIS PIN	TC CP-75	0.4 (0.18)
MEDIUM R-CLIP	TC RC-MED	- (-)