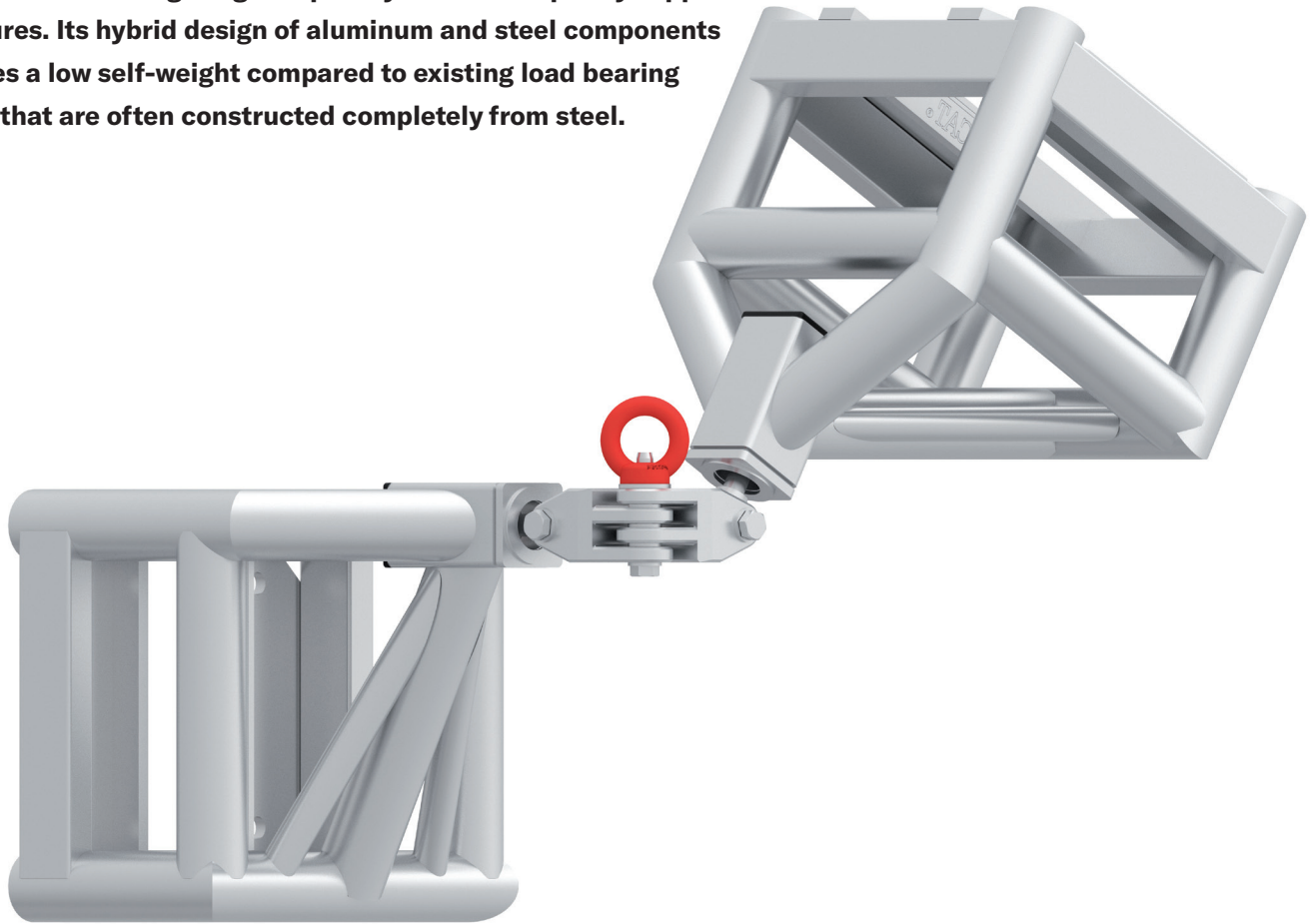


New Angles in Creative Lighting

Our new, Light Duty 12 x 12 Ultimate Hinge provides interesting angles for creative lighting setups on your lower capacity support structures. Its hybrid design of aluminum and steel components provides a low self-weight compared to existing load bearing hinges that are often constructed completely from steel.



- › Constructed from aluminum with a steel hinge for high strength, reliability and safety
- › Steel lifting eye for use with electric hoists
- › Eliminates book corner damage
- › Available with either a plated connection that's compatible with our Light duty 12 x 12 plated truss or a spigot connection
- › Fully load bearing hinge with an allowable capacity of 1/2T or 500 Kg.



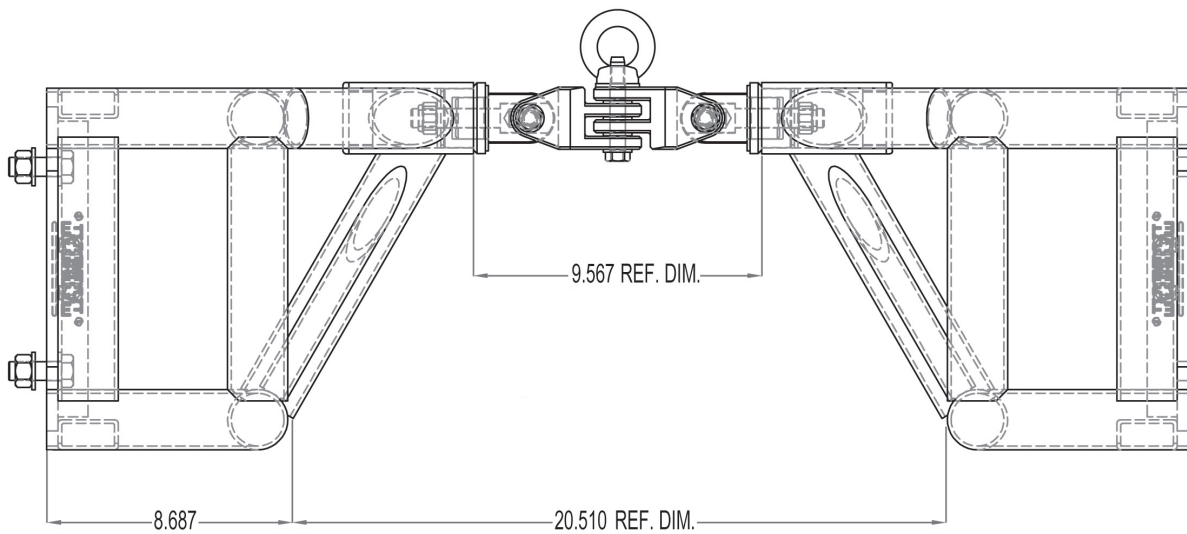
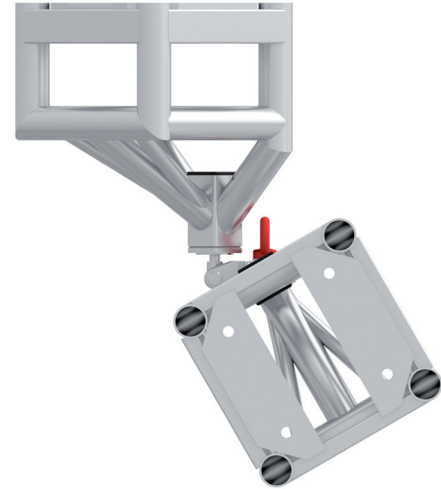
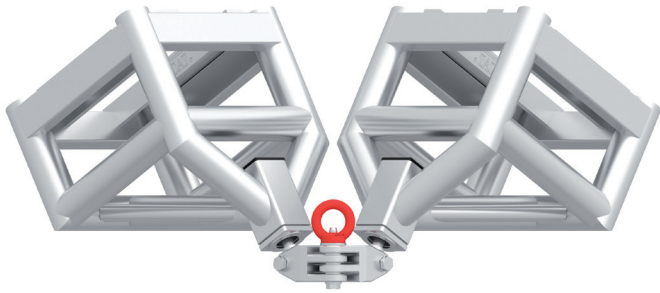
TOMCAT USA, Inc.
5427 N. National Dr.
Knoxville, TN 37914
USA

950 Lawrence Dr., Suite B
Thousand Oaks, CA 91320
USA

T +1 (865) 219-3700
sales@tomcatusa.com
www.tomcatglobal.com



Hinge on to new angles with the TOMCAT Ultimate Hinge!



Technical specifications

Main Chords	2" OD x 1/8"	Aluminum
Diagonals	1" OD x 1/8"	Aluminum
Lifting eye	M12	
Hinge		Steel
Self-weight		41 lbs



TOMCAT USA, Inc.
5427 N. National Dr.
Knoxville, TN 37914
USA

950 Lawrence Dr., Suite B
Thousand Oaks, CA 91320
USA

T +1 (865) 219-3700
sales@tomcatusa.com
www.tomcatglobal.com

