

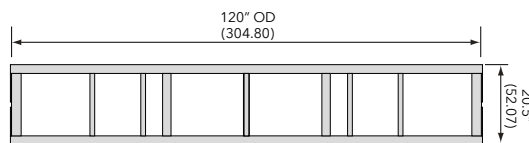
Box truss

Heavy-duty 30 x 20.5 plated

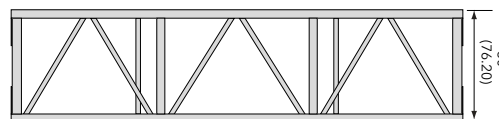
- › Heavy-duty 30 x 20.5 plated
- › Standard lengths are 10', 8' and 5'
- › Custom lengths available upon request
- › Equipped with bolts
- › Main chords are 2" OD x 1/8" aluminum
- › Diagonals are 1" OD x 1/8" aluminum
- › Available with casters
- › Fabricated by AWS / SFL certified welders



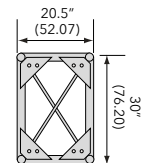
Plan Views



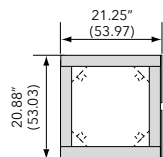
Plan



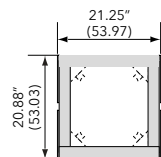
Elevation



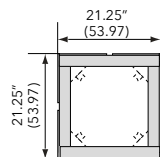
End View



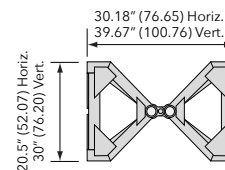
2-Way Corner Block



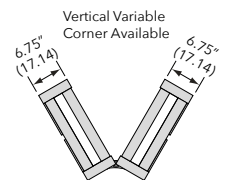
3-Way Corner Block



4-Way Corner Block



Center Pivot Horiz.
Articulating Block



Horizontal Variable
Corner

Loading chart

Span feet (meters)	Maximum allowable uniform loads			Maximum allowable point loads					
	Load lbs/ft	Load lbs (kgs)	Max Defl. in.	center point Load lbs (kgs)	Max Defl. in.	third point Load lbs (kgs)	Max Defl. in.	quarter point Load lbs (kgs)	Max Defl. in.
10 (3.05)	584	5840 (2649)	0.02	5840 (2649)	0.04	2920 (1325)	0.03	1947 (883)	0.03
20 (6.09)	287	5740 (2604)	0.18	3704 (1680)	0.19	2778 (1260)	0.24	1852 (840)	0.23
30 (9.14)	159	4770 (2164)	0.53	2387 (1083)	0.43	1790 (812)	0.54	1193 (541)	0.51
40 (12.21)	85	3400 (1542)	0.95	1703 (772)	0.78	1277 (579)	0.97	852 (386)	0.90
50 (15.24)	50	2500 (1134)	1.46	1273 (577)	1.23	955 (433)	1.51	637 (289)	1.42
60 (18.28)	32	1920 (871)	2.11	970 (440)	1.80	728 (330)	2.17	485 (220)	2.05

Note: Deflections reported in the tables on the left are the maximum expected for full loadings (indoor only). All loads are based on 10' (3.05 m) sections. Other section lengths are available. Load tables are reprinted from engineering reports developed by Parkhill, Smith & Cooper, Inc., Structural Engineers, and apply to truss fabricated after December 1989.

Heavy-duty truss 30 x 20.5 plated End plates equipped for double sets of bolts, supplied with one set only

Product Description	Item Code	Weight lbs (kgs)
5 FT HEAVY-DUTY TRUSS	TC 3020-060B	63 (28)
8 FT HEAVY-DUTY TRUSS	TC 3020-096B	86 (39)
10 FT HEAVY-DUTY TRUSS	TC 3020-120B	94 (43)
HEAVY-DUTY 2-WAY CORNER	TC 3020-C2B	35 (16)
HEAVY-DUTY 3-WAY CORNER	TC 3020-C3B	42 (19)
HEAVY-DUTY 4-WAY CORNER	TC 3020-C4B	47 (21)
HD ARTICULATING BLOCK HORIZONTAL (center pivot)	TC 3020-AHB	67 (31)
HD ARTICULATING BLOCK VERTICAL (center pivot)	TC 3020-AVB	67 (31)
HD VARIABLE CORNER HORIZ. (book style with brace)	TC 3020-VHB	55 (25)
HD VARIABLE CORNER VERT. (book style with brace)	TC 3020-VVB	50 (23)
HD 2-WAY SLEEVE BLOCK FOR 12" TOWER	TC 3020-S2B	46 (21)
HD 3-WAY SLEEVE BLOCK FOR 12" TOWER	TC 3020-S3B	53 (24)
HD 4-WAY SLEEVE BLOCK FOR 12" TOWER	TC 3020-S4B	59 (27)