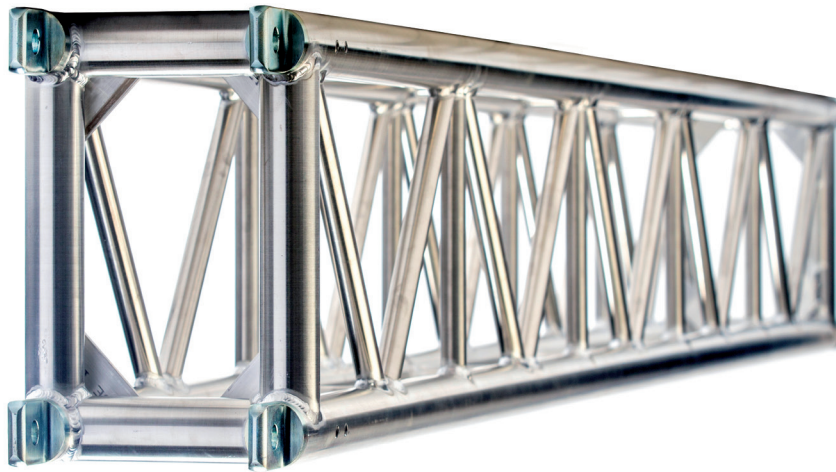
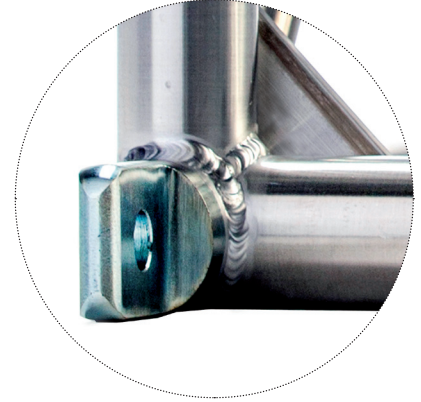


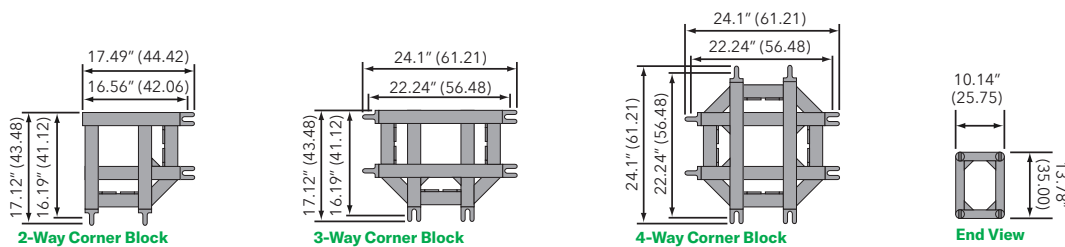
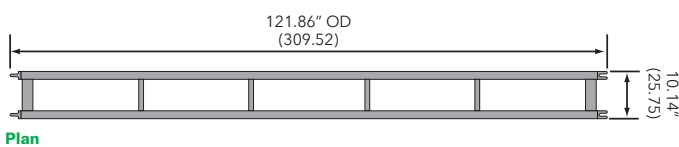
# Box truss

## Super beam 13.7 × 10 spigoted truss

- › Standard lengths are 10', 8' and 5'
- › Custom lengths available upon request
- › Equipped with steel spigots
- › Main chords are 2" OD × 3/16" aluminum
- › Diagonals are 1" OD × 1/8"
- › Fabricated by AWS / SFL certified welders



Plan Views – Connector orientation specified by customer



## Loading chart

Span feet (meters)	Maximum allowable uniform loads			Maximum allowable point loads					
	Load lbs/ft	Load lbs (kgs)	Max Defl in.	center point Load lbs (kgs)	Max Defl. in.	third point Load lbs (kgs)	Max Defl. in.	quarter point Load lbs (kgs)	Max Defl. in.
10 (3.05)	766	7660 (3475)	0.15	3831 (1738)	0.12	2873 (1303)	0.16	1916 (869)	0.15
20 (6.09)	186	3720 (1687)	0.61	1863 (845)	0.49	1397 (634)	0.63	932 (423)	0.58
30 (9.14)	78	2340 (1061)	1.36	1184 (537)	1.12	888 (403)	1.41	592 (269)	1.32
40 (12.21)	41	1640 (744)	2.44	827 (375)	2.03	620 (281)	2.50	413 (187)	2.35

Note: Deflections reported in the tables on the left are the maximum expected for full loadings (indoor only). All loads are based on 10' (3.05 m) sections. Other section lengths are available. Load tables are reprinted from engineering reports developed by Parkhill, Smith & Cooper, Inc., Structural Engineers, and apply to truss fabricated after December 1989.

## Super beam 13.7 × 10 spigoted truss Connections are steel spigots & 3/4" clevis pins

Product Description	Item Code	Weight lbs (kgs)
5 FT SUPER BEAM TRUSS	TC 1310-060S	44 (20)
8 FT SUPER BEAM TRUSS	TC 1310-096S	64 (29)
10 FT SUPER BEAM TRUSS	TC 1310-120S	77 (35)
SUPER BEAM 2-WAY CORNER BLOCK	TC 1310-C2S	27 (12)
SUPER BEAM 3-WAY CORNER BLOCK	TC 1310.C3S	38 (17)
SUPER BEAM 4-way corner block	TC 1310-C4S	46 (21)
3/4" CLEVIS PIN	TC CP-75	0.4 (0.18)
MEDIUM R-CLIP	TC RC-MED	- (-)